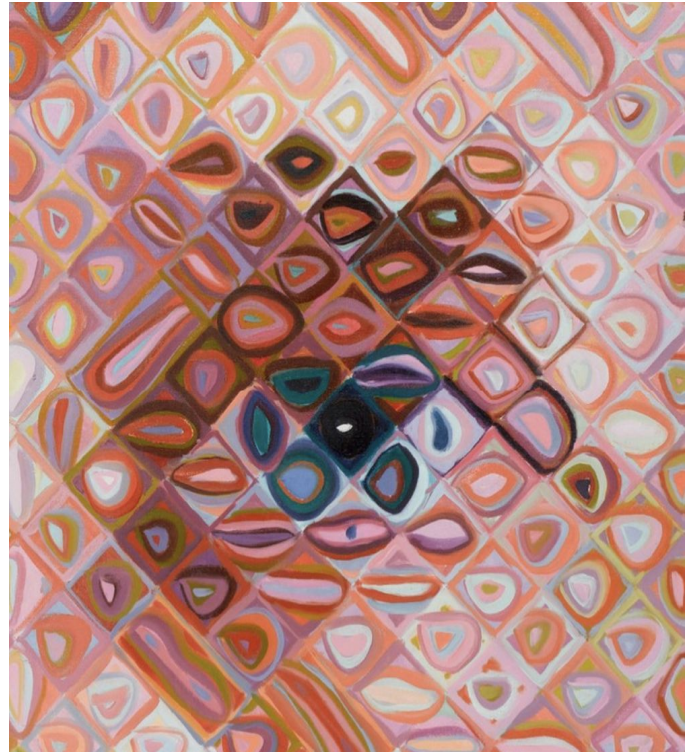


Chuck Close

Samuel Heie

Bibliography

Chuck Close was born on July 5, 1940 in Monroe, Washington. At a young age, Chuck was diagnosed with dyslexia as well as prosopagnosia, a neurological disorder which impairs one's ability to recognize the faces of familiar people. Bouts with illnesses rendered him unable to attend school regularly and his dyslexia compounded his academic problems. Close picked up painting to occupy the time he had while out of school, picking up portrait painting. He partially attributes his passion for portratry to the problems he faced as a result of prosopagnosia. Close attended community college where he studied art, then finished his degree at the University of Washington achieving a B.A. He also attended the Yale University Summer School for Music and Art, later attending Yale full time for graduate school. Close also received a Fulbright grant to attend the Academy of Fine Arts Vienna. After his time in academics, Close moved to New York City and setup a workshop in SoHo.



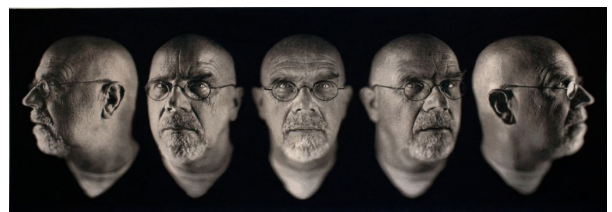
Chuck Close, *Bill Clinton zoomed in*, 2006



Art and Abstraction

Close's style and the medians he has used to create his photorealistic portraits have adapted and diversified over the course of his career. Beginning with photography, oil on canvas, pencil, and watercolor, his methods have evolved as far as finger painting, airbrush, woodcuts, and silk screens. But the unchanging elements connecting all of his work and arguably the elements that define his unique style have remained the same: his use of grids to create individual cells each with their own abstraction of color, shape, and consistency.

(Left) Chuck Close, *Keith/Square Fingerpaint*, 2006, (Below) Chuck Close, *Self Portrait/Five Part*, 2006



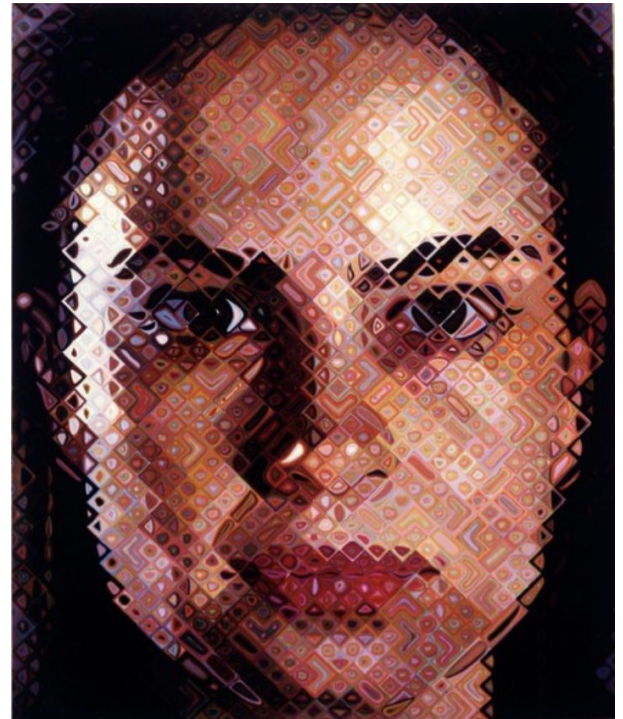
Critical Acclaim

“In all its permutations... the work itself could hardly be more formal... Close’s sitters are consistently posed in a manner that disallows any but the subtlest of individual inflections.” -Robert Storr

“His paintings and prints are systematically constructed as a series of modular, abstract units.” -Rona Roob

“He begins each new project armed only with this love, for he believes that whatever his art is capable of expressing has to be discovered obliquely, by grappling with more concrete and mundane problems of technique.”

-Colin Westerbeck



Chuck Close, *Inka*, 2006



Chuck Close, *Inka*, 2006

“Since the 1960’s, when he first arrived in New York City, Close has sought freedom in constraint and beauty at the limits of form.” -Lyle Rexer

“Chuck Close’s images have been constantly changing, his portraits of himself, his family, and his friends continue and his grid set remains, but Close has been continually adjusting his style.

Works Cited

Storr, Robert. “Chuck Close: Angles of Refraction.” *MoMA*, vol. 1, no. 1, 1998, pp. 31–33., www.jstor.org/stable/4381381. Accessed 27 Feb. 2020.
Roob, Rona. “From the Archives: Chuck Close and MoMA.” *MoMA*, vol. 1, no. 1, 1998, pp. 34–34., www.jstor.org/stable/4381382. Accessed 27 Feb. 2020.
Westerbeck, Colin. “Alex/Reduction Prints, 1991-93 by Chuck Close.” *Art Institute of Chicago Museum Studies*, vol. 25, no. 1, 1999, pp. 76–99. *JSTOR*, www.jstor.org/stable/4113005. Accessed 27 Feb. 2020.
Rexer, Lyle. “Chuck Close: Daguerreotypes.” *Aperture*, no. 160, 2000, pp. 40–49. *JSTOR*, www.jstor.org/stable/24472813. Accessed 27 Feb. 2020.

Shapiro, Michael. “CHANGING VARIABLES: CHUCK CLOSE & HIS PRINTS.” *The Print Collector's Newsletter*, vol. 9, no. 3, 1978, pp. 69–72. *JSTOR*, www.jstor.org/stable/44130417. Accessed 27 Feb. 2020.